

ADVERTISING BOARDS



KOVINC
www.kovinc.si

ADVERTISING BOARDS

Special attention has been paid to the development of advertising boards for indoor and outdoor designation of structures. On the basis of an integrated graphic image, customers' requests and wishes we engineer, manufacture and install advertising boards for business, trade and manufacturing structures.

Our team of experts will advise and prepare complete solutions for you, starting from design and constructing to electro and assembling solutions

We design, manufacture and assemble:

- single side or double side advertising billboards, illuminated or non-illuminated versions,
- self standing letters in illuminated or non-illuminated implementation,
- direction boards, totems, poles and pictograms in illuminated or non-illuminated versions
- lighting boxes, borders and brackets with inscription surface made of linen, Plexiglas or Aluminum,
- roadside designation boards in illuminated or normal implementation.

PETROL d.d. Ljubljana, MERKUR d.d., EUROPLAKAT d.o.o., MERCATOR d.d., ZORA, INTERMERKUR NOVA d.o.o., MERCATOR-H d.o.o., MERCATOR-S d.o.o., SPORTINA Bled, CONDOR Real d.o.o., AVTO KRKA d.o.o., CONDOR Real d.o.o., UNITRON, SIMOBIL d.d., RTC Krvavec d.d., EMIGMA d.o.o., WURCHER Media, INLES, LIDL, UNI-MOBIL d.o.o., MERSTEEL d.o.o., PAN ELEKTRONIK d.o.o., MOTOMAT d.o.o., MANA Moda d.o.o., EURO PETROL d.o.o., TAM TAM d.o.o., NIMBUS d.o.o., PROTECHNIK d.o.o., etc.



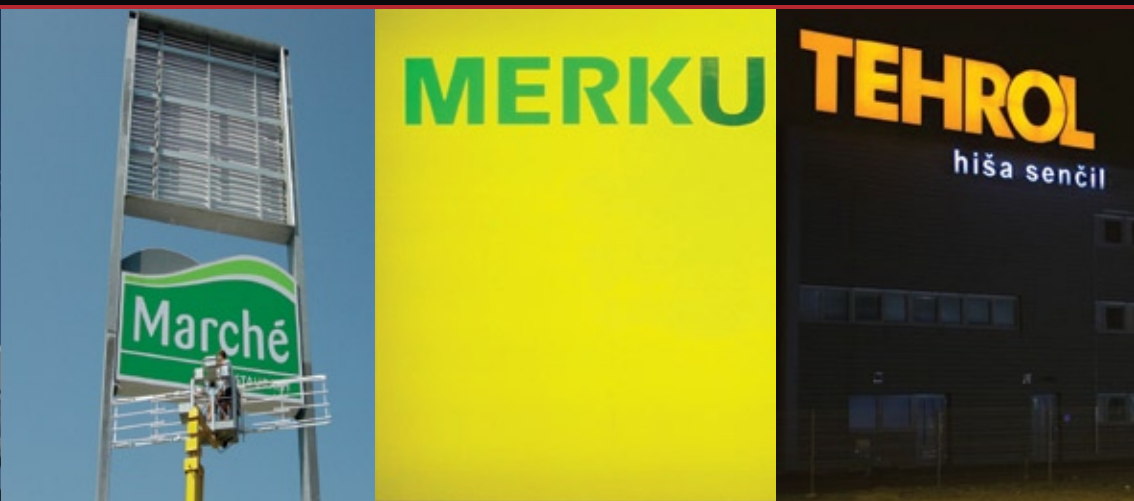
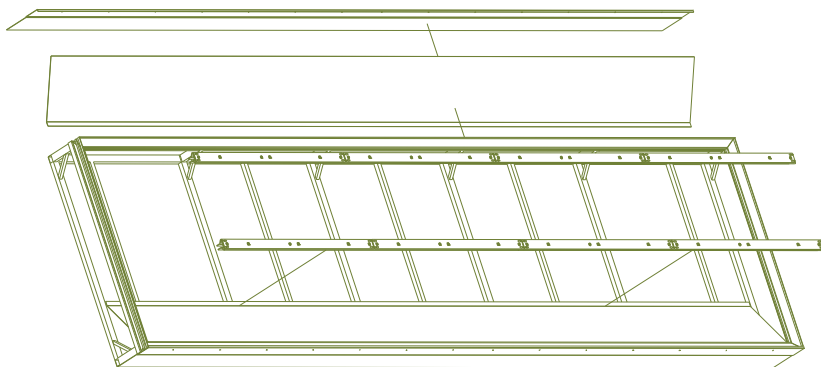
LIGHTING CASSETTES of larger dimensions

Lighting cassettes are produced in »on-linen« design, which means that on the framework, manufactured from Al tubes and Al re-inforcements, specially formed, extruded Al profiles are welded, and translucent linen is simply stretched on them by means of tensioners.

Illumination is usually achieved by fluo lamps (powered over standard or electronic pre-switching devices) or with Neon tubes, powered by transformer supplies.

Both methods are being phased out, especially because of energetic ineffectiveness, and partly also because of recently introduced government's »Decree on limit values due to light pollution of environment«.

LED illumination technology is being increasingly used.

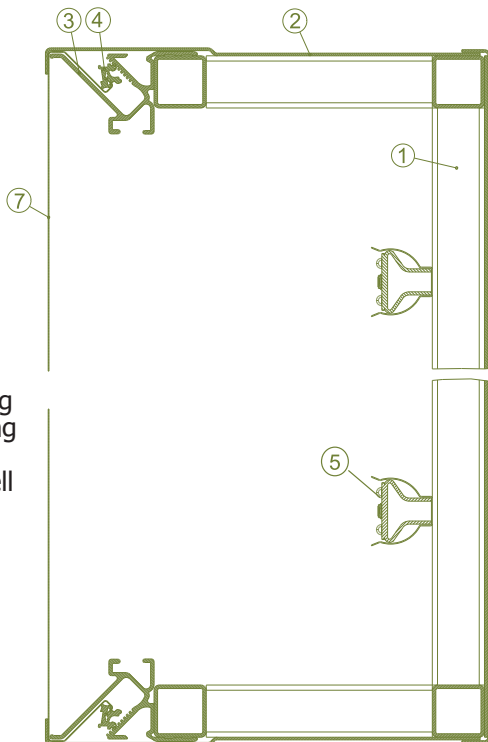


LED technology

In co-operation with our development partners we offer the latest generation of LED illuminating technology, we build-in LED diodes and long life, energy efficient (very low costs of electric energy consumption, low maintenance and servicing costs...) power supplies of the highest quality in accordance with before-mentioned »Decree on limit values due to light pollution of environment« and acquired SIQ certificates.

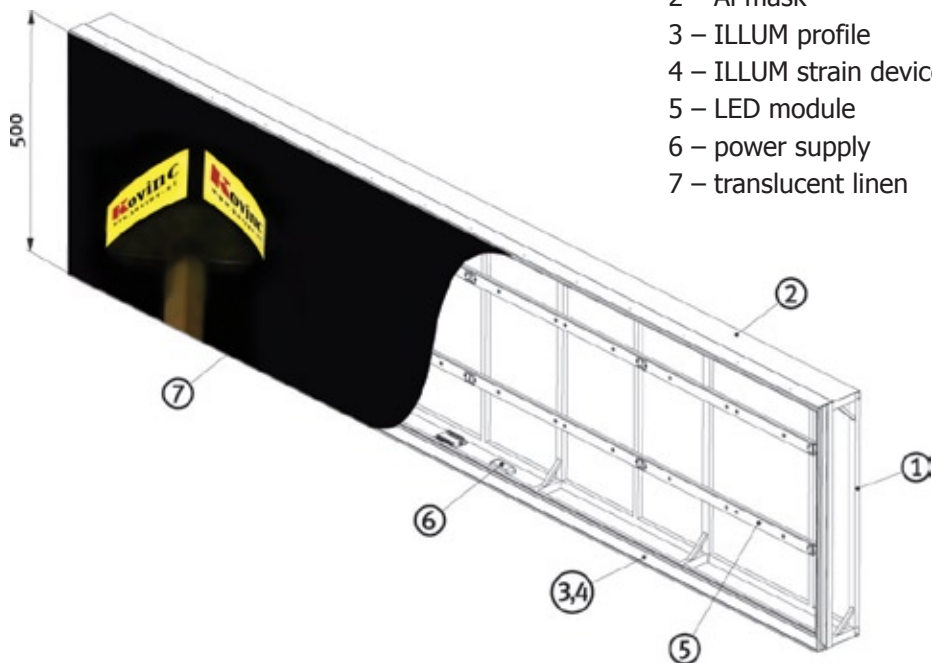
Besides manufacturing and marketing lighting cassettes (as well as of other forms of lighting and non-lighting elements), we also offer Al profiles and tensioners to our partners as well as complete palette of LED modules.

In this way everybody can complete his products with suitable illumination – economical, reliable and long lasting.



dom 

Lighting cassette



- 1 – Al lighting cassette framework
- 2 – Al mask
- 3 – ILLUM profile
- 4 – ILLUM strain device
- 5 – LED module
- 6 – power supply
- 7 – translucent linen



Advertising boards' luminosity measurements

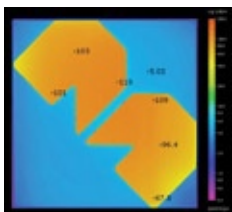
Luminosity measurements of our advertising boards were made with the most up-to-date methods, which enable luminosity inspection of several thousand points of every board.

In this way we have optimized our advertising boards and avoided occurrence of unpleasant spots that are excessively bright or dark.

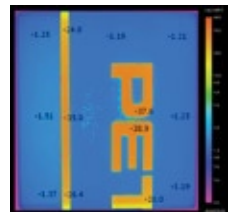
Our advertising boards have incredible uniformity. Lower figures present pictures of advertising boards and luminosity values measured with a calibrated digital photo camera and Photolux® software bundle. Measurements were made in collaboration with Laboratory for illumination and photometry on Faculty of Electrical Engineering in Ljubljana.



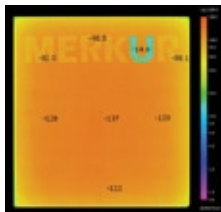
Mercator's logo and measured luminosity
(35 W / m²)



Part of Petrol inscription and measured luminosity
(17 W / m²)



Merkur's logo and measured luminosity
(35 W / m²)

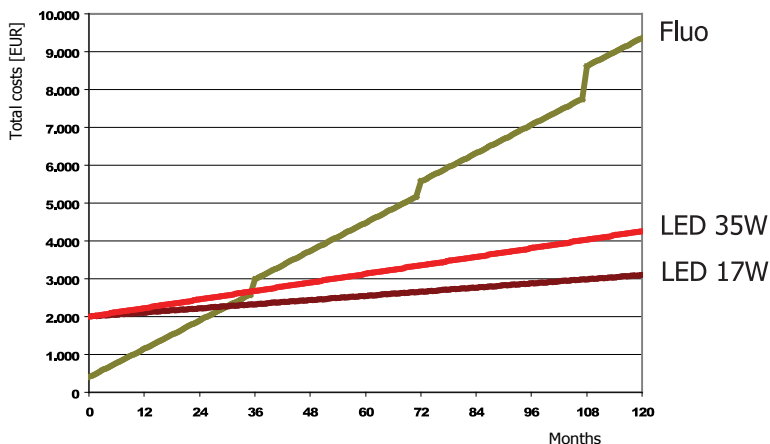


Investment return

We are aware that the starting costs of an investment in LED technology installation for lighting cassettes is higher than investing in fluorescent lamps. However, investment is quickly returned (in up to 3 years), as the electric power consumption is up to 10 times smaller than consumption of existing advertising boards.

If we also consider maintenance costs and life period, in some cases we can reduce return period to less than 2 years.

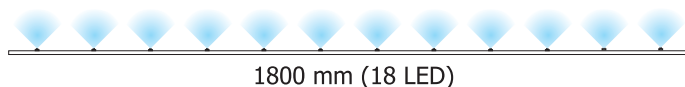
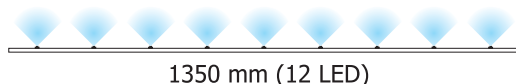
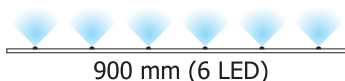
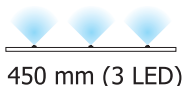
Because of the „Decree on limit values due to light pollution of environment“ (Official Gazette of the Republic of Slovenia No. 81/2007), use of fluorescent lamps at 17 W/m² and at 35 W/m² is actually impossible.



LED modules

Our customers can choose among modules of different lengths. You will be able to illuminate a lighting board of any dimensions with them. All modules are equipped with light diodes of the last generation, which feature high light efficiency as their main characteristics. At proper depth of the lighting cassette (20cm) your advertising board will be bright and logotype evenly lit through.

Modules are available in the following dimensions:



When dimensioning the lighting part of your advertising board please consider that the recommended distance between LED modules is between 200 and 250 mm.

Certificate on conformance

permanently installed lamps –
SKP lighting advertising cassettes.

Certificate of advertising board illumination

SIQ certificates upon LVD, EMC and
CE directive for advertising board
illumination with LED modules, in
accordance with the decree on limit
values of light environment
pollution.

